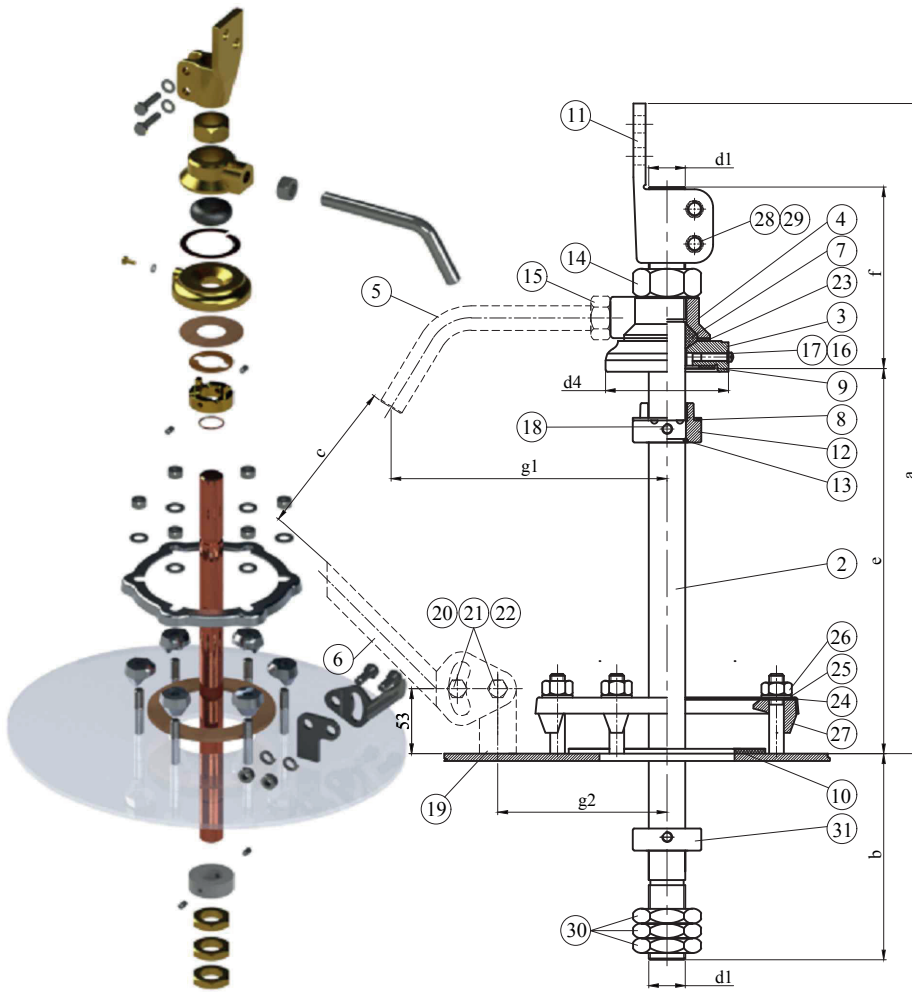


24 kV 1000 A ÷ 3150 A
DIN 42533 Outdoor Transformer Bushings



Insulation Levels acc. to IEC 60137:2017			
1	Highest Voltage (kV)	24	
2	Rated Current (A)	1000	2000 3150
3	Lightning Impulse Withstand Voltage (BIL) (kV)	125	
4	Power Frequency Withstand Voltage (kV)	dry 55 wet 50	
6	Rated Thermal Short-time Current (2s) (kA)	17,68	35,36 55,68
7	Rated Dynamic Current (kA)	62,5	125 196,87
8	Minimum Cantilever Withstand Load (N)	1250	2000 3150

1000 A
n* 6 fixing studs steel M12x65 (not supplied with the kit) Bolt circle 180 mm

2000 A - 3150 A
n* 6 fixing studs steel M12x65 (not supplied with the kit) Bolt circle 200 mm

***All dimensions are "mm"

Type	Current (A)	Class		a	b	c	d1	d4	e	f	g1	g2
		Outdoor (f)	Indoor (i)									
20 Nf 1000	1000	20N	-	530	168	155	M30x2	100	314	148	225	138
20 Nf 2000	2000	20N	-	605	168	155	M42x3	120	314	178	230	148
20 Nf 3150	3150	20N	-	635	168	155	M48x3	120	314	183	235	148