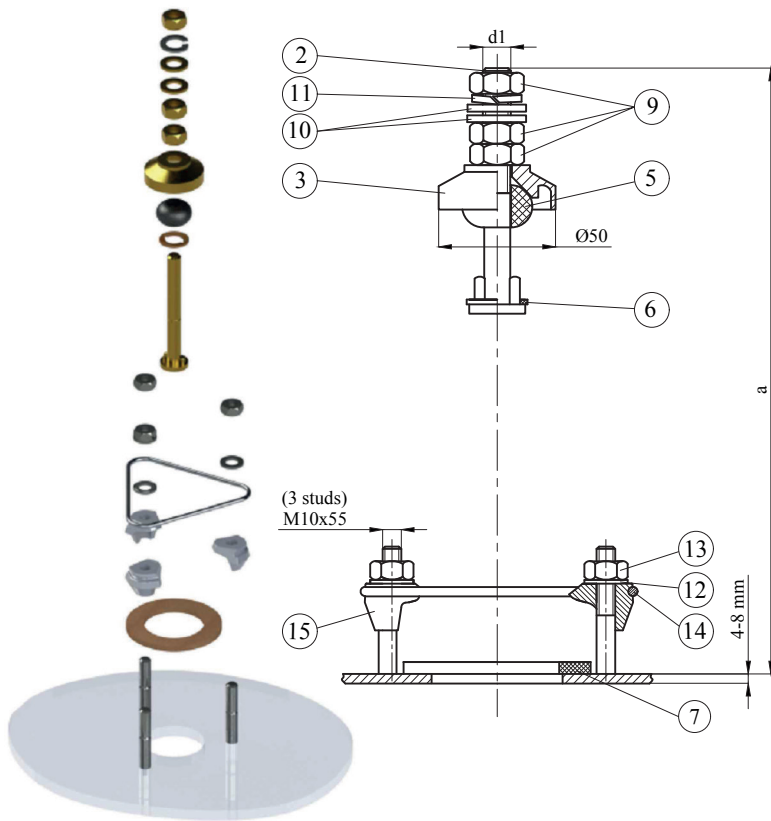
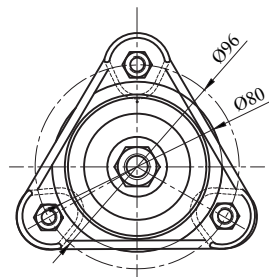


17,5 kV 250 A
Heat Shrinkable Bushing / Indoor Type

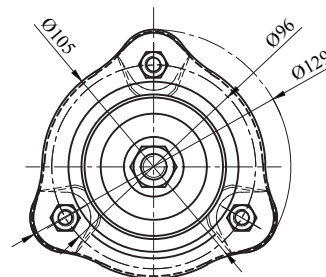


Insulation Levels acc. to IEC 60137:2017		
1	Highest Voltage (kV)	17,5
2	Rated Current (A)	250
3	Lightning Impulse Withstand Voltage (BIL) (kV)	95
4	Power Frequency Withstand Voltage (kV)	dry 42 wet 38
5	Creepage Distance (mm)	-
6	Rated Thermal Short-time Current (2s) (kA)	4,42
7	Rated Dynamic Current (kA)	15,63
8	Minimum Cantilever Withstand Load (N)	1000

15	3	Fastener Fastener DIN 42538
14	1	Clamping Ring Fixing Flange
13	3	Nut DIN 934
12	3	Washer DIN 125
11	1	Washer DIN 127
10	2	Brass Washer DIN 125
9	3	Brass Nut DIN 934
7	1	Gasket
6	1	IT Gasket
5	1	O-Ring
3	1	Brass Cap
2	1	Brass Bolt
POS.	PCS.	DESCRIPTION



"Clamping Ring Details"



"Fixing Flange Details"

n° 3 fixing studs steel M10x55 (not supplied with the kit) Bolt circle 96 mm
***All dimensions are "mm"

Type	Description	a	d1
10NI/250A	Clamping Ring Type	260	M12x1,75
10NI/250A	Fixing Flange Type		

